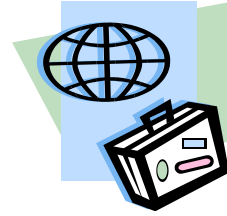


IMPORTANT BAGGAGE INFORMATION



Excess Checked Baggage



❖ For travel outside the United States, travelers are allowed to check two (2) bags each, free of charge. Any checked baggage in excess of this will be charged the following rates:

Third bag \$200

Bags 4 & 5 \$350 each

Bags 6 – 10 \$600 each

❖ For travel within the United States, travelers are allowed to check one (1) bag each free of charge. All baggage in excess of this will be charged the following rates:

Second bag \$50*

Third bag \$125

4th – 10th bag \$200 ea



***For international passengers making a connection/stopover on their originating flight to or from the U.S. or at a later date during their travel within the U.S., the \$50 2nd bag fee will not apply.**



❖ For all 1st Class and Business Class travel, domestic and international, travelers are allowed to check three (3) bags each with a maximum weight of 70 lbs (32 kg) and 62 linear inches (157 cm) each.

The following charges are IN ADDITION to the above:

❖ Any baggage in excess of 50 pounds (22.5 kg) will be charged the following rates:

51-70 lbs

\$90 ea within the U.S. - \$150 ea outside the U.S.

71-100 lbs	\$175 ea within the U.S. - \$300 ea outside the U.S.
Over 100 lbs	not permitted

❖ Any baggage exceeding the allowed total length + width + height of 62" will be charged the following rates:

63" - 80"	\$175 each
Over 80"	non permitted

Carry-on Baggage

You are allowed one carry-on bag and one personal item on board most flights.



Carry-on baggage must weigh less than 40 pounds (18kg) and cannot exceed a combined length + width + height of 45 inches, with an average size of 22"x14"x9", and must be able to fit in the overhead bins or underneath the seat in front of you.

Personal items include purses, briefcases, camera cases, diaper bags, laptop computers, and other similar or smaller items.

You are also allowed to bring aboard food for immediate consumption, assistive devices, such as wheelchairs and crutches, one box or bag of duty free merchandise, coats, jackets and umbrellas.

At times, based on available space and additional restrictions on certain flights, there may be more limits in addition to those mentioned above.

Special Items

Special items include:

- **Overweight bags:** Bags over 50 lbs
- **Oversize bags:** Bags over 62 inches (when you total the length + width + height)
- **Baby items:** Stroller, child restraint seats
- **Assistive devices:** Wheelchair, crutches
- **Sporting equipment:** Bicycle, bowling equipment, fishing equipment, golf equipment, ski equipment, parachute, surfboard, windsurf board, scuba tank
- **Musical instruments**



- **Fragile/bulky items:** Saddle, antlers, Hawaiian pineapples, military duffle bags
- **Pets**

If you have a special item:

- **Each special item you're checking counts as one bag.**
- When checking in online, you don't have to tell the airline what the special item is—you **just have to let them know you have one, and sometimes you will be asked for the dimensions of the item.**
- An agent will determine any possible charges for your item when you bring it to the baggage drop.
- We recommend you check with your airline prior to arrival, so that you are fully prepared to pay the fees for any special items you intend to bring with you.

Flying between Athens and Mytilene

- ❖ You are allowed to check one bag weighing up to 33 lbs (15 kg) in Economy Class and 44 lbs (20 kg) in Business Class.
- ❖ You may carry only one (1) piece of luggage in Economy Class and two (2) pieces of luggage in Business Class.
- ❖ The first can be no larger than 21 ½"L x 15 ½"H x 8"W (55cm x 40cm x 20cm), or 8" in length for clothes-carriers, and may not exceed 17 ½ pounds (8 kg).
- ❖ The second (Business Class only) can be no larger than 17 ½ "L x 13 ½ "H x 8"W (45cm x 35cm x 20cm), and may not exceed 11 pounds (5 kg).
- ❖ Any baggage in excess of the above will be charged \$3.11 (€2) for each kg (2.2 lbs) over the appropriate limit.
- ❖ This information is valid at the time of publication, but should always be checked prior to arrival. We will attempt to update our information as it changes.



What You Should Know

- ❖ **All** baggage is subject to search.
- ❖ Airlines have the right to refuse baggage whose size, weight, character or condition is unsuitable for transportation.
- ❖ Baggage check-in requirements vary with each airport, but **MUST** be met by everyone. Please make sure to review the check-in requirements of the airports you will be using prior to arrival.
- ❖ You must have your name somewhere on your luggage, and also inside your luggage.

- ❖ Always carry medicine, money, valuable documents (especially your passport!), keys, jewelry, cameras, and other small fragile items in your carry-on luggage or on your person.
- ❖ Never lock your luggage unless you use an approved TSA lock!!
- ❖ Please visit www.waittime.tsa.dhs.gov for information on wait times at your airport. These wait times must be added to the following check-in times:
 - ❖ You must be at the gate **15 minutes prior** to your scheduled departure time.
 - ❖ When traveling **outside** the U.S., you must be checked in **60 minutes prior** to your scheduled departure time.
 - ❖ When traveling **within** the U.S. for your connecting flights, your baggage must be checked in **at least 30 minutes prior** to your scheduled departure time. **However, please check with your airline and airport prior to arrival, as there are some exceptions (45-60 minutes prior for some airports.)**
 - ❖ When **leaving to come home from overseas**, your baggage must be checked in **at least 60 minutes prior** to your scheduled departure time.
 - ❖ **On all flights, any liquid items must be carried in a transparent plastic re-sealable 1-quart (1 liter) bag, in individual containers with a maximum capacity of 3.3 ounces (100 ml) each. You are limited to one of these bags per passenger. It must be sealed and placed separately, outside of your luggage, during the security screening process.**
 - ❖ Products you purchase in Duty Free Shops at airports can also be carried into the plane. They must be placed in a special sealed bag, provided by the shop, and they **must not be opened before you are screened**, or they could be confiscated at the checkpoint, if opened.
 - ❖ Security screening staff is obliged to ask you to dispose of any liquid products that do not comply with the conditions of the new European Regulation. **Please always comply with all airport regulations and security measures.**
 - ❖ Pregnant women are usually accepted on flights up to the end of the 35th week of pregnancy. If you will be taking a two-week trip, keep this in mind for your return flight.
 - ❖ Visit the Transportation Security Administration's website at www.tsa.gov for more information on traveling.
 - ❖ Another great site for important travel information:
www.safetravel.dot.gov/tips.html